

CANADIAN

SEPTEMBER 2017

Kristen Eppich's
Favourite Summer Nibbles

HOUSE & HOME

THE MAGAZINE OF HOME & STYLE

Best Small Spaces

**"I lived in
425 sq.ft.
and loved it!"**

Page 44

**Get Organized:
MAX OUT YOUR
STORAGE WITH
FOUND SPACE**

**EXPENSIVE BENCH
OR EASY DIY?**

PLUS
HOW TO DO "MINIMAL"
THE RIGHT WAY



In homeowner Sara Shafran's loft, an L-shaped sectional is ideal for lounging, but it can also be split into two to flank the coffee table for entertaining or hosting an event. A concrete floor was the obvious choice for a working artist, while a hammock chair offers a perch for creative thinking. *Sectional, Montauk Sofa; dining table, coffee table, dining chairs, hammock chair, pink throw pillows, Medina Design House; wall lamp, Flos; rug, Jan Kath.*

1,296 | SPACE TO:
SQ.FT.

DISPLAY

A CONTEMPORARY ARTIST'S WEST COAST HOME IS HER PERSONAL GALLERY.

Text by STACY LEE KONG | Photography by TRACEY AYTON

IF SARA SHAFRAN'S VANCOUVER LOFT feels a little like an art gallery, there's a reason for that. A contemporary artist and art dealer, Sara worked with Erica Schmidt and Ivan Quintana of Medina Design House to transform her home to house seasonal exhibitions and events. "My goal is to merge my work and my life," Sara says. "I want to use it as an exhibition space for emerging contemporary artists, Canadian and international — a place to screen films and host dinners or lectures relating to the show."

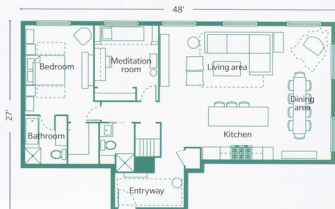
An avid yoga enthusiast, Sara turned a spare bedroom into a meditation space and hopes to eventually host yoga classes. "I'm a huge advocate of retreats, where no technology is allowed." She's also drawn to furnishings with an authentic history, such as vintage Turkish rugs and her grandmother's dress, which hangs in the entry. "Every object I own needs to have meaning."



Sara, in front of a vibrant grouping of her own artwork, which has pride of place over a custom floating console. **Console design,** Medina Design House.



THE FLOOR PLAN







An extra-thick 3" slab of honed Calacatta marble makes the island feel luxe

ABOVE: The main living area was renovated to combine the kitchen, dining area and living room into one open-concept space. The kitchen was enlarged by two feet into the adjoining dining space to accommodate an expansive island with seating for three.

Cabinetry colour, Iron Mountain (2134-30), Benjamin Moore; **hardware,** Schoolhouse Electric & Supply Co.; **countertop,** Bordignon Marble & Granite; **barstools,** Hay; **faucet** by Waterstone, Cantu Hardware.

FAR RIGHT: Satin brass trim and hardware glams up the range hood and cabinetry.

RIGHT: A bronze smudge bowl, tucked in behind a vase of flowers, is used to burn sage and clear energy.

OPPOSITE: A hutch done in millennial pink — a Winners score that Sara had painted — anchors the dining area and hints at her artist's sense of colour. Iconic Martinique wallpaper, as seen in the Beverly Hills Hotel, and woven end chairs instill a tropical holiday-at-home vibe. **Hutch colour,** Antoinette, Annie Sloan.





Articulated lights
add industrial edge
to the bedroom's
pale palette

***"EVERYTHING I OWN HAS A
SPECIFIC SPOT IN MY HOME.
I TRY TO USE STORAGE
MINDFULLY"***

New floor-to-ceiling built-ins maximize storage without detracting from the bedroom's serene mood. Pink accents, fringed lace-trimmed bedding and a wistful painting by Amanda McMorran are unabashedly feminine. **Bed**, Urban Outfitters; **built-in design, bedding**, sheepskin **rug**, Medina Design House; **articulated lamps**, Lampe Gras; **bedside tables**, West Elm; **hardware** (on built-in), Bradford Hardware.

The guest room was transformed into a studio-meditation room. To make this nook, designers Erica and Ivan sourced antique corbels for architectural interest, then added custom mouldings and layers of pillows and textiles. "I've always dreamed of having a nook like this. I call it my Cleopatra lounge," says Sara. **Corbels**, green **cabinet**, Antique Warehouse; **blanket**, **throw pillows**, **prayer beads**, Medina Design House; **rug**, Jan Kath; occasional **table**, Urban Outfitters.



SARA'S LESSONS LEARNED

Explore Different Layouts: Before work began, the designers spent a lot of time creating potential floor plans. "We had a 3-D model, so we moved the pieces around to show Sara all the options," Ivan says.

Max Out Storage: There was only one closet in the loft, so the designers added plenty of places to tuck things away. "We tried to create a place for everything," says Erica. "In the kitchen, there's a pullout pantry to the right of the sink, and we even added shelves to the top of Sara's washer and dryer."

Raise the Bar: The ceilings are 9' tall, but they feel much loftier thanks to a classic design trick: "We mounted the curtain rods pretty much as high as we could, which draws the eye up and makes the ceilings feel taller," Erica explains.

Sara finds this tapestry of a queen and her animals empowering



ABOVE: Ivan and Erica swapped in a gold faucet to mirror the kitchen's design. **Wallpaper**, Medina Design House; **mirror**, CB2.

LEFT: In the entry, Sara's grandmother's dress and a tapestry from her aunt hold sentimental value. **Rug**, Jan Kath.

SMALL SPACES: LAYERED CONDO

756
SQ.FT.

| SPACE TO:

RECHARGE

This vintage leather sofa will develop even more character with age.

Retailer Jonathon Litchfield's living room has a modern lodge vibe, showcasing carefully selected pieces that blend Danish and Japanese aesthetics. He spied the Borge Mogensen sofa with rosewood legs at a vintage store. "They didn't know what they had!" he says of his score. An antique bison hide creates warmth when layered over a cosy jute rug. And Jonathon loves that the patchwork brick wall tells the story of the building: "It speaks to the wabi-sabi effect — of things not always being so perfect." **Coffee table**, Ikea; **jute rug** by Armadillo & Co., Litchfield.

A RETAILER'S HOME IS AN ESCAPE FROM "STUFF."

Text by **STACY LEE KONG**

Photography by **TRACEY AYTON**

JONATHAN LITCHFIELD'S CONDO in Vancouver's Gastown neighbourhood is a short 25-minute walk from his lifestyle shop, Litchfield, but you'll rarely catch him bringing his work home. "There are evenings when I hammer out a couple of work emails on the sofa, as we all do, but I think home should be a refuge, so I definitely try to keep them separate," he says.

Jonathon is dedicated to creating a sanctuary-like space with spare decor, but don't mistake his edited approach for minimal. "People use that word to describe my style, but I think minimalism is too stark," he says. "I love texture and visual warmth."

Look around his downtown rental condo for a master class in understated layering. The mid-century modern leather sofa is draped with a chunky throw, while vignettes of books and objects are expertly arranged on tables and shelves. Every piece has a story, whether it was a gift from a friend or family member, or something he picked up on his travels.

"There aren't a lot of big statements in my home," Jonathon says. "I like to leave enough space so the items have a chance to speak."

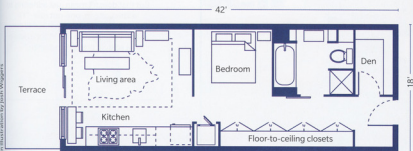


Jonathon uses open shelving to hold extra plates, wineglasses and objects that inspire him.

"Style is deeply personal," he says. "It's just what feels right." *Shelving unit, Hay; plates, Litchfield.*



THE FLOOR PLAN





"I can't be in a space that feels cluttered; it affects my mood and productivity," Jonathon says. In his galley kitchen, a Martha Sturdy table (below) doubles as a dining surface and desk. Dry goods are stored in the condo's converted den (not shown), which he turned into a pantry and closet. "Useful storage makes my life feel more at ease."



JONATHON'S LESSONS LEARNED

Supersize Storage: "I have a 12-foot-long floor-to-ceiling closet. It looks like a panelled hallway, and it's a lifesaver. If I didn't have that, there's just no way I could possibly live in this space. It's my clothes and shoe storage, and kind of my 'junk drawer.'" Jonathon also lined the converted den with shelves.

Lay Low: To give the illusion of higher ceilings — and more space — Jonathon plays with proportion. "I like to keep everything really low: the bed, tables, sofas, art. Keep your furniture in proportion to your home."

Make the Cut: "In a small space, I need to thoughtfully edit things into and out of my life," Jonathon says. But that doesn't mean just adhering to a strict one-in, one-out rule. "I'll choose one side table instead of two big ones or select a tiny stool to keep a seating area feeling open."



The "good-day" cymbal was a gift from a friend, who told Jonathon, "If you have one, ring it"